

15

1503 02

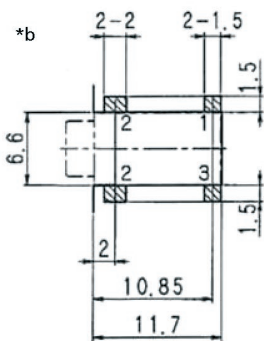
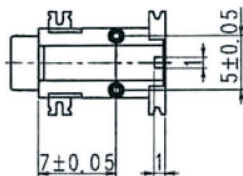
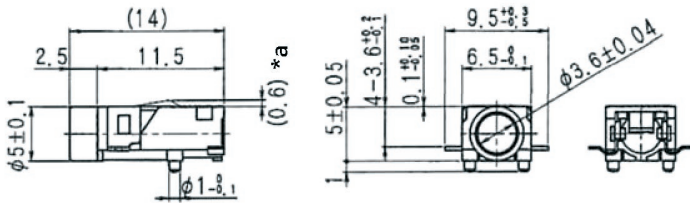
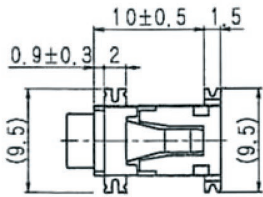
Jack connectors



Jack chassis socket acc. to JIS C 6560 JC35J3A, 3.5 mm, 3 poles/stereo, angular version, for printed circuit boards, surface mounting technology (SMT), manual soldering only

15

1503 02



Environmental conditions

Temperature range -20 °C/+70 °C

Materials

Insulating body PBT, HB according to UL94
Contact spring Cu alloy, tin-plated/silver-plated
Inner sleeve

Mechanical data

Mating cycles 5000
Insertion force 5-30 N¹
Withdrawal force 5-30 N¹

¹ measured with a gauge plug

Electrical data (at T_{amb} 20 °C)

Contact resistance < 30 mΩ
Rated current 1 A
Rated voltage 34 V AC/DC
Rated impulse voltage 500 V/60 s
Insulation resistance > 100 MΩ

Associated products

Counterparts
☑ 1532 07 ☑ KLS 40 ☑ KLS 44
☑ WKLS 40

*a with mated plug
*b printed circuit board layout, components side view

15

1503 02

| Designation | Pole Number | PU (Pieces) | MDQ (Pieces) |
|-------------|-------------|-------------|--------------|
| 1503 02 | 3 | 500 | 500 |

Packaging:

in bulk, in a cardboard box or a plastic bag